

Lunar Canyon

Embracing the Next Level of AI Innovation



ASUS NUC 14 Pro AI
(NUC14LNK/ NUC14LNV)

Attention

- Please [Download and install](#) ASUS Official Fonts → **TT Norms, Roboto Fonts System**
- Intel Embargo Date:
 - ✓ Please Do Not share any information of Intel® Core™ Ultra processor (Series 2) **vPro to the media or end-customers before Jan. 1-21, 2025.**
 - ✓ Channel/Retail customers can start sales of Intel® Core™ Ultra processor (Series 2) **vPro products to end-users after Jan. 1-21, 2025.**
 - ✓ Sales allowed prior to Sales Embargo period, only to distributors/retail/resellers under NDA to enable sales to the end-users **by Jan. 1-21, 2025.**
- Copilot+ PC Disclaimer:
 - ✓ Please always show the disclaimer while displaying Copilot in Windows on ASUS NUC 14 Pro AI. Please refer to the picture below. The Event Team had made a SPEC card with the disclaimer below. Please put it next to ours.
 - ✓ Disclaimer: “Copilot+ PC experiences are coming. Requires free updates available starting later this year. Timing varies by device and region. See aka.ms/copilotpluspcs”



Asset Schedule & Link

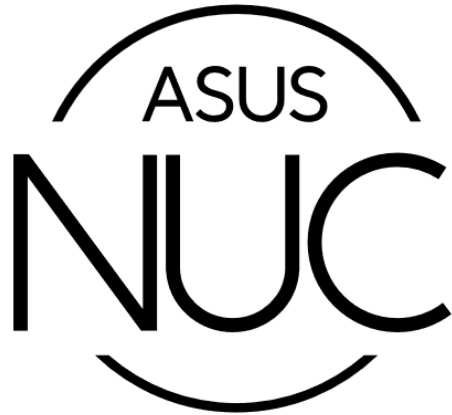
Lunar Canyon (NUC 14 PRO AI)

MP W50 2024/12/14 Sat

NO	Asset Due	WK	Target Due	w	Status	Finish Date	Gap Days
a1.1	Marketing Kick off meeting [MP-13W]	37	2024/9/13	Fri	Done	2024/8/2	42
a1.2	Naming [MP-13W]	37	2024/9/13	Fri	Done	2024/7/16	59
a1	Product Photos [MP-14W]	36	2024/9/6	Fri	Done	2024/8/12	25
a2	Sales Kit & Data Sheet [MP-10W]	41	2024/10/9	Fri	Done		
a2.1	Giftbox Packaging Artwork [MP-13W]	37	2024/9/13	Fri	Ongoing		
a3	Webpage [MP-6W]	44	2024/11/1	Fri	Done	2024/8/28	65
a4	Scenario Photos [MP-10W]	41	2024/10/9	Fri	Ongoing		
a5	NPI Letter [MP-10W]	41	2024/10/9	Fri	Done		
a6	MR Review Guide [MP-2W]	48	2024/11/29	Fri	Ongoing		
a7	Channel site [MP-6W]	44	2024/11/1	Fri	Ongoing		
a8	Product Video [MP-6W]	44	2024/11/1	Fri	Ongoing		
a9	Key Visual [MP-6W]	44	2024/11/1	Fri	Not yet		
a9.1	A+ Content [MP-2W]	48	2024/11/29	Fri	Not yet		
a9.2	POSM & Banners [MP-3W]	47	2024/11/22	Fri	Not yet		
a9.3	Social Media Asset (Short Video & Post) [MP-8W]	42	2024/10/18	Fri	Not yet		
a10	Webpage Go Live [N]	50	2024/12/13	Fri	Done	2024/9/6	98
a11	Press Release [N]	50	2024/12/13	Fri	Not yet		

Commitment to Tech Excellence

Why NUC



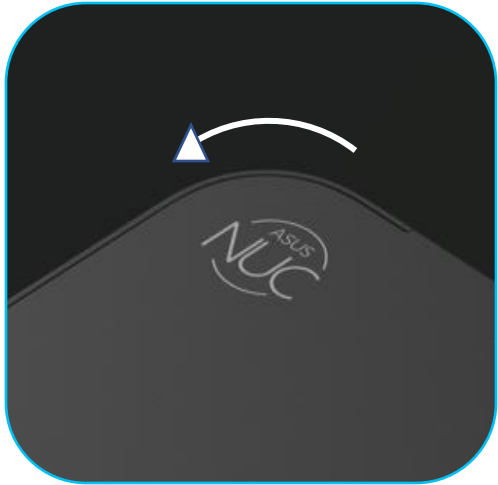
The ASUS NUC brand represents a commitment to technological excellence, prioritizing innovative product design, to push the boundaries of performance and user experience.

Developed through a partnership between ASUS and Intel, the ASUS NUC product lines anchor on delivering uncompromised performance in the smallest form factors, backed by industry best quality and reliability, innovative modular designs, extended lifespan options, smart cooling solutions, and advanced AI capabilities. The versatility of the products shines through an array of configurations catering to diverse user needs, from developers, to power users, to casual home use.

Positioned as the preferred choice for a variety of business applications, vertical industries, and everyday users, the ASUS NUC combines exceptional performance with essential features, aiming to shape the next generation of PC experiences.

With a focus on supporting diverse businesses and enhancing PC applications, the ASUS NUC aspires to deliver on the brand promise of delivering the Next Unit of Compute (NUC) and make a lasting impact in the ever-evolving tech landscape.

Why NUC?



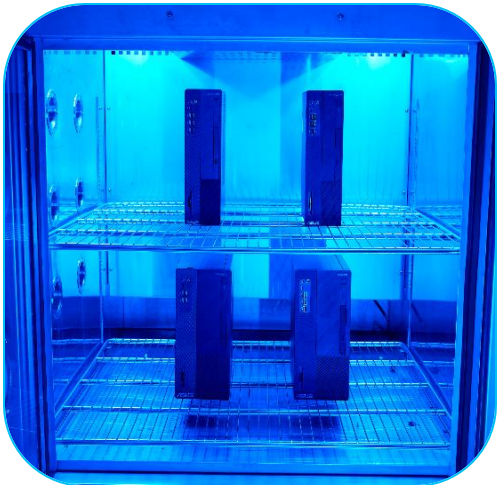
Exceptional Design

Explore the sleek, user-friendly design of the NUC with rounded corners for aesthetic appeal and safety. Despite its compact size, a built-in fan ensures optimal performance during long, high-load operations, extending the device's lifespan. The NUC 14 Essential delivers stability and reduced noise levels, thanks to cooler-running internal components.



Compact but Powerful

The ASUS NUC can handle the most demanding workloads. Its compact 0.56-liter chassis takes up minimal space on a desktop or workstation, making it ideal for small and medium-sized businesses, retail stores, educational institutions, small offices or homes.



Stability and Reliability

ASUS NUC is rigorously tested for durability, withstanding vibrations, unpackaged drop, and humidity test to ensure reliability in the most extreme conditions. It performs flawlessly in temperatures ranging from 0°C to 50°C and humidity levels between 35% and 85%, all while enduring these conditions for up to 3 days.




Longevity and Manageability

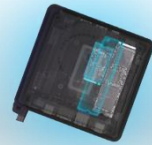
ASUS Control Center (ACC) for Enterprise is an excellent centralized management tool for servers and client devices. It minimizes administration efforts and maximizes uptime.

Embracing the Next Level of AI Innovation

ASUS NUC 14 Pro AI is a next level commercial AI PC that redefines the boundaries of power, security, and sustainability. Crafted with unwavering attention to detail, this feature-rich lineup empowers professionals and discerning users alike to unlock new levels of productivity, collaboration, and innovation. With cutting-edge AI capabilities, robust security, and efficient design, ASUS NUC 14 Pro AI is poised to revolutionize the way you work and create.



Intel® Core™ Ultra processor
(Series 2, formerly codenamed Lunar Lake)



M.2 2280 NVMe Support



LPDDR5x - 8533 MT/S



Intel® Arc™ GPU

Up to 2X Performance*
Compared to the Previous Generation



Next Level AI

NPU accelerates AI processing



ASUS NUC 14 Pro AI

Unleashing AI Prowess with Compact Efficiency



2.5G Ethernet



Robust Design

MIL-STD 810H Multiple Tests Passed

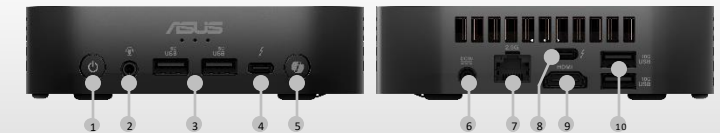


Internal Speaker with Smart AMP and Microphone

Voice Command

Compact Size

130 x 130 x 34 mm



- | | | |
|-------------------|-------------------|-------------------|
| 1. Power button | 5. Copilot Key | 9. HDMI |
| 2. Audio jack | 6. DC-in | 10. USB 3.2 Gen 2 |
| 3. USB 3.2 Gen 1 | 7. 2.5G Ethernet | |
| 4. Thunderbolt™ 4 | 8. Thunderbolt™ 4 | |

Target Markets



SMB & Offices

SOHO
Call Center
Back Office
Enterprises



Retail Shops

Digital Signage
Kiosk
POS



Indoor Industrial

Smart Manufacturing
Smart Banking
Smart Healthcare
Smart City

Target Usages



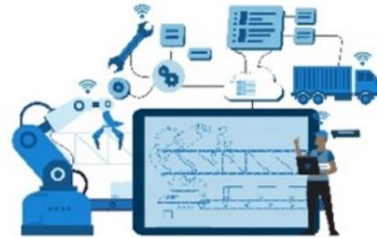
Content Creation

- Enhanced Multimedia Processing Capability
- AI-powered assistant for images and videos processing



Productivity

- High performance for multi-tasking tasks
- Compact, modern and versatile design suite for SMB and Enterprises



Edge Computing

- Powerful platform with optimal performance, efficiency, and security
- Comply with 100+ AI applications and 300+ AI Features



Digital Signage

- Supports up to Three 4K Displays
- Robust design with reliable 24/7 sustained operation



Kiosk and POS System

- Powerful platform with optimal performance, efficiency, and security
- Robust design with reliable 24/7 sustained operation

NUC 14 Pro AI Highlight



- **Powerful Platform:** Featuring the latest Intel® Core™ Ultra processor (Series 2) with multiple CPU, GPU, NPU architectures, offering 120 platform TOPS
- **Transformative Graphic:** Built-in Intel® Arc™ GPU, delivering up to 67 TOPS.
- **Enhanced AI Capabilities:** Delivering up to 48 NPU TOPS, tripled the AI performance of the previous generation with lower power consumption
- **Voice Command:** Built-in microphone and speaker with smart AMP support voice command to activate AI-driven Applications.
- **Ultrafast Connectivity:** Intel® Wi-Fi 7 (5 Gig), Bluetooth® 5.4, Thunderbolt™ 4 (DP2.1)
- **Security and Reliability:** Built-in Trusted Platform Module (TPM), Secure Boot with Fingerprint Recognition for Windows Hello Enhanced Sign-in Security, and Robust Design with MIL-STD 810H multiple tests passed and reliable 24/7 sustained operation
- **Compact Design:** Boost productivity with space saving (< 0.6L), toolless design, industry-leading quality, fitting in anywhere

Spec

- Intel® Core™ Ultra 9/7/5 Processor (Series 2)
- Intel® Arc™ Graphic
- Embedded Dual LPDDR5X 8533, 16GB/32GB
- Intel® Wi-Fi 7 (5 Gig) (802.11be)(Tri-Band) 2x2, Bluetooth® 5.4
- 1 x M.2 2280 PCIe Gen4x4, supports 256GB~2TB NVMe™ SSD
- 2 x Thunderbolt™ 4 (Support DisplayPort 2.1)/ 2 x USB 3.2 Gen2 Type A / 2 x USB 3.2 Gen1 Type A / 1 x 3.5mm Headset Jack / 1 x Kensington Lock / 1 x HDMI 2.1 (TMDS) / 1 x 2.5G RJ45 LAN / 1x Copilot Button / 1 x Fingerprint Module/ 1 x Internal Digital Mics / 1x Internal Momo-Speaker with External Smart AMP / 1 x DC-in



Powerful Platform



Featuring up to the latest Intel® Core™ Ultra 9 processors 288V, offering up to **120 platform TOPS**.



Three AI accelerators:

- ✓ **CPU:** Fast Response (Ideal for low-latency AI workloads)
- ✓ **GPU:** High Throughput (Ideal for AI-accelerated digital content creation)
- ✓ **NPU:** Low Power (Ideal for sustained AI workloads and AI offload for energy saving)

Fastest CPU Core*

+18%

Most Efficient x86 Processor**

up to **50%**

Unmatched AI Performance***

3x

*vs. Intel® Core™ Ultra 7 155H

**Lower package power vs. Intel® Core™ Ultra 7 165H

***vs. Intel® Core™ Ultra 7 155H on UL Procyon® AI NPU Int8

See [intel.com/performanceindex](https://www.intel.com/performanceindex) for details.

Transformative Graphic

Built-in Intel® Arc™ 140V/130V GPU, driven by **Xe2 Architecture**, delivers up to **67 TOPS**.



XeSS (Xe Super Scaling) upscaling technology, powered by Intel® XM(Xe Matrix Extensions) AI engines provide gaming and creation performance far beyond expectation.

The first GPU to integrate **LPDDR5x-8533 MT/s memory** on chip, which offers up to **1.5X Bandwidth**, comparing to DDR5.

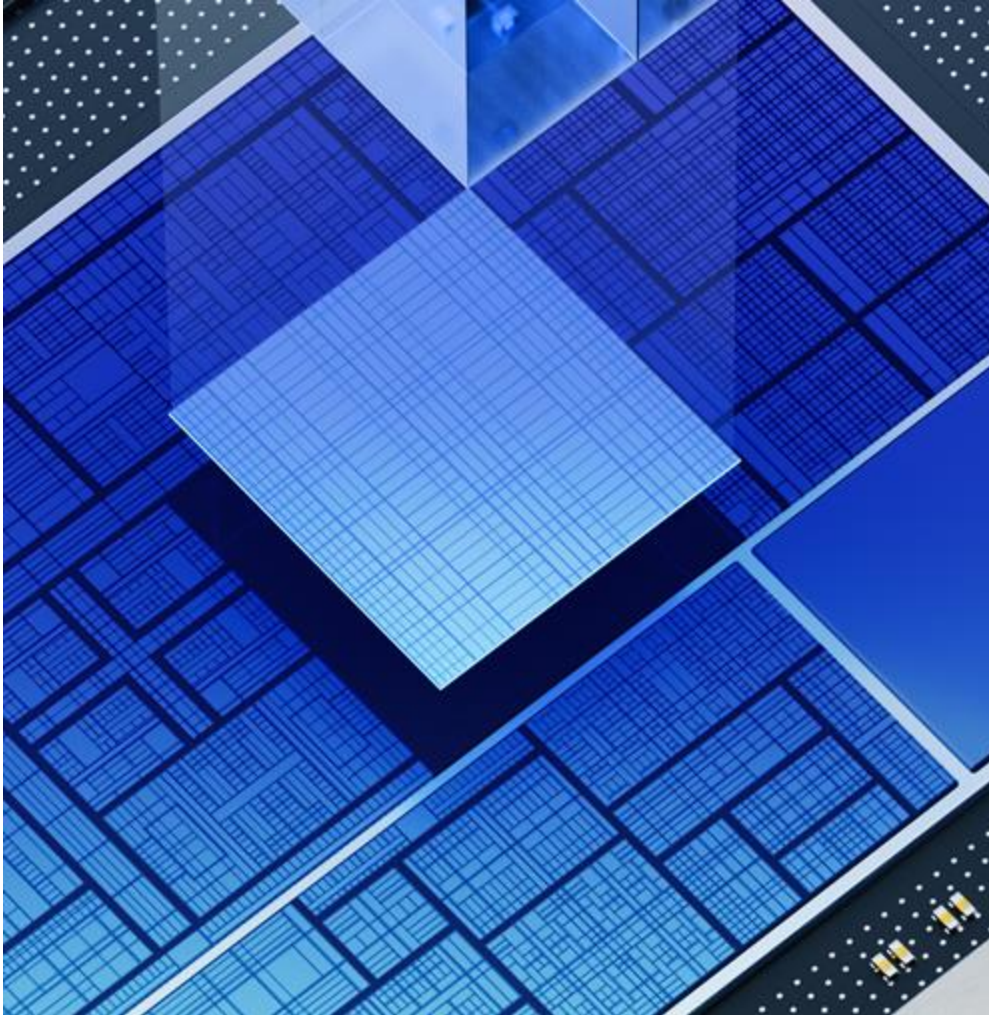
up to **1.8x**
Peak performance
uplift*

up to **2x**
Better GPU power
efficiency**

*vs. Intel® Core™ Ultra 7 155H
**vs. Intel® previous generation.

See [intel.com/performanceindex](https://www.intel.com/performanceindex) for details.

Enhanced AI Capabilities



The **worldwide 1st Copilot+ PC desktop**, delivering up to **48 NPU TOPS**, tripled the AI performance of the previous generation

NPU (Neural Processing Unit) is designed for AI computations to maximize performance for AI workloads.

NPU ensures fast, efficient, and private AI experiences by processing locally on the device, it optimizes performance while preserving data privacy with lower consumption.

2x

Performance per
Watt*

up to **50%**

Lower
package power*

3x

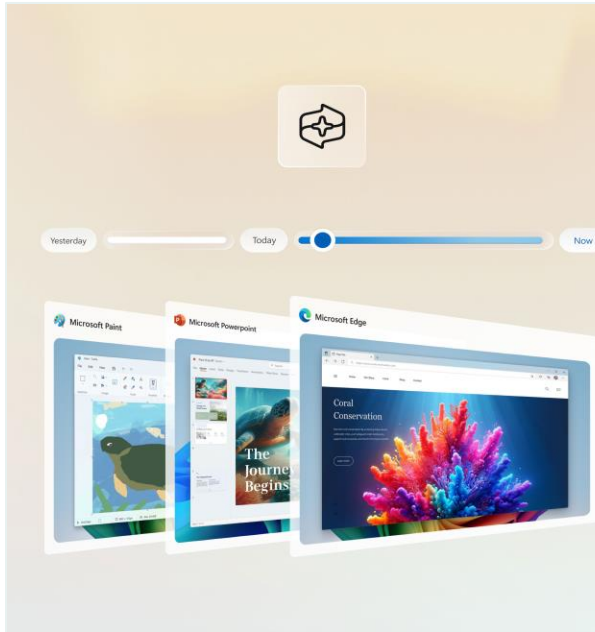
Unmatched AI
Performance**

*vs. Intel® Core™ Ultra 7 155H

**vs. Intel® previous generation.

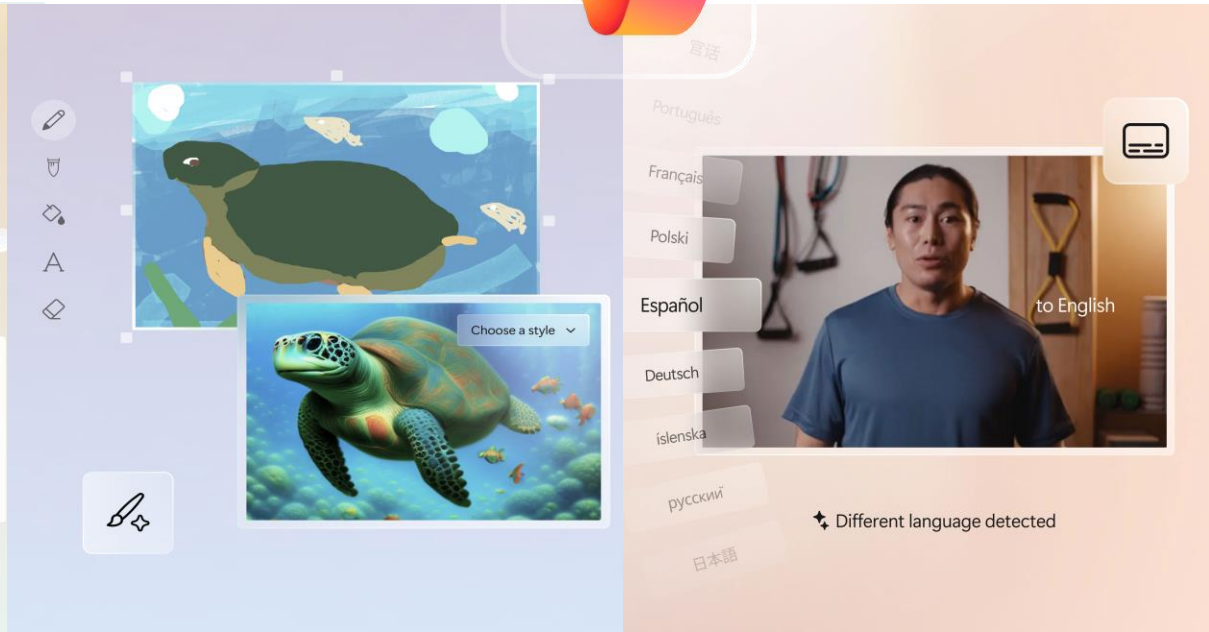
See intel.com/performanceindex for details.

Copilot PC



Find it instantly Recall

Find anything on your Windows device easily.

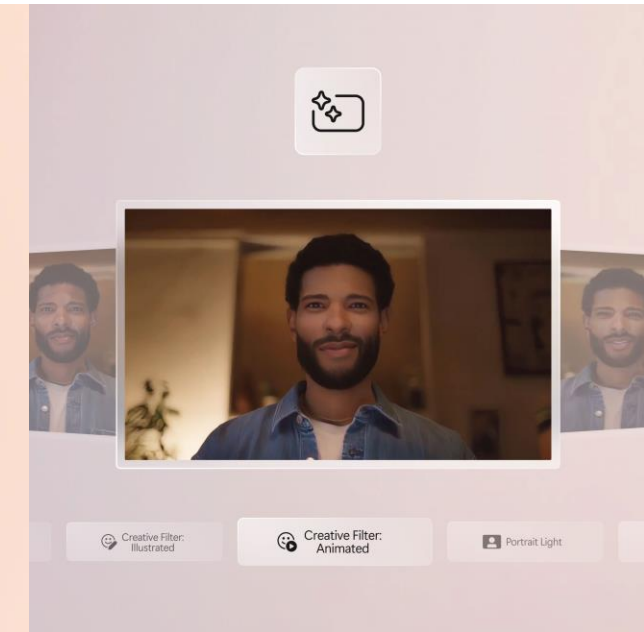


Create your vision Cocreator

AI-Generated images with sketch and text prompts.

Real-time subtitles Live captions

Automatic Real-time translation.



Better video calls Studio Effects

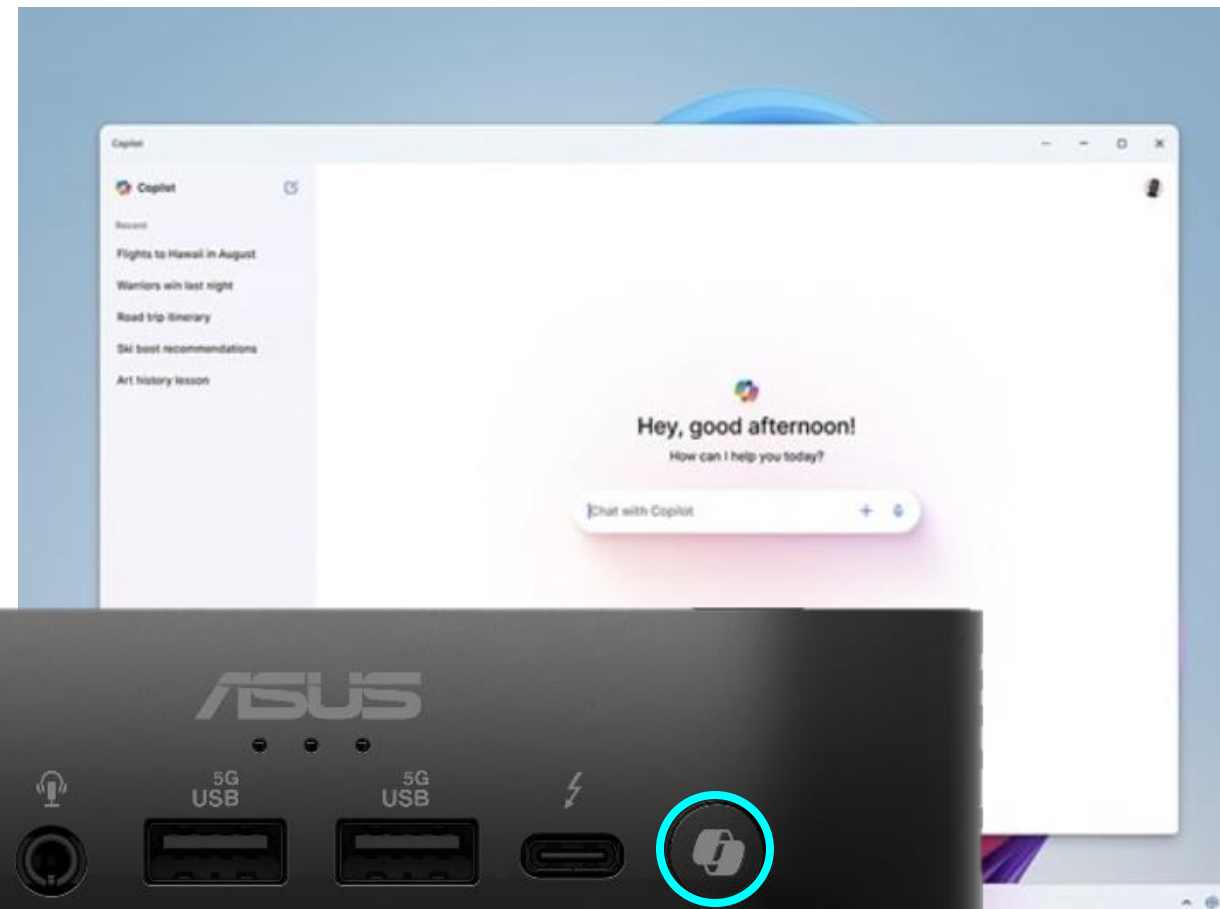
Improves the quality of video and audio.

Copilot+ PC experiences are coming. Requires free updates available starting later this year. Timing varies by device and region. See aka.ms/copilotpluspcs

Voice Command

- **Built-in a Speaker** with a Smart AMP and a Digital Microphone with AI Noise Cancellation.
- Press **Copilot Key** at the front panel to launch Copilot in Windows
- Click the icon of **microphone** to activate the Voice Command to work with your AI-powered assistant.

Copilot in Windows 11 is an AI-powered assistant that helps you get answers and inspirations from local across the web, supports creativity and collaboration, and helps you focus on the task at hand.



* Screen simulated, subject to change. Copilot in Windows (in preview) is available in select global markets and will be rolled out to additional markets over time. The Copilot key will be available on many new Windows PCs starting in early 2024. When Copilot in Windows is not enabled on the device, pressing the Copilot key will launch Windows Search See aka.ms/WindowsAIFeatures

Ultrafast Connectivity

Blazing speed and efficiency on both wired and wireless connectivity



WiFi 7 (5 Gig)

- 2.4x higher peak data rates
- 2.4GHz, 5GHz, 6GHz Tri-Band
- Ultra-Low Latency



Bluetooth® 5.4

- Enhanced Multi-Device Connectivity
- LE (Low Energy) Audio with better quality
- Faster Boot times
- Lower Latency



Thunderbolt™ 4

- 3 Video streams per port
- Supports DisplayPort 2.1
- Total support Triple 4K Displays.



2.5G LAN

- Fast and stable data transfer speed
- Higher level security

Wi-Fi 7 to 2025 B2B Market

The New Powerhouse for Office Connectivity

1

High Capacity

Supports **up to 16 simultaneous streaming devices**, ideal for open office spaces.

2

Fast Download Speeds

Wi-Fi 6: Up to 9.6 Gbps (1GB file in ~8 seconds).
Wi-Fi 7: Up to 46 Gbps (**1GB file in ~2 seconds**).

3

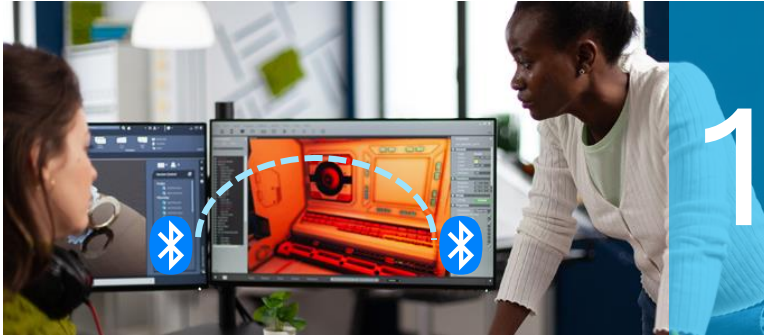
Enhanced Reliability and Security

Provides stable data transmission for uninterrupted meetings and **advanced encryption to protect corporate data**.



Bluetooth 5.4

Advantages for Commercial Enterprises



1

Accelerated Data Transfer to Boost Work Efficiency

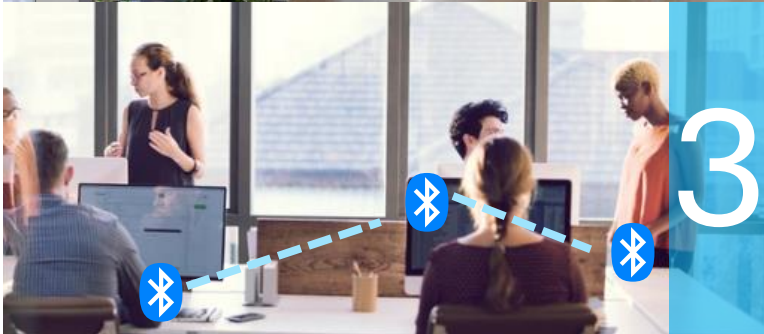
Bluetooth 5.4 supports data transfer **speeds of up to 2 Mbps, a 100% increase over Bluetooth 5.3's 1 Mbps**. In a business environment, this means faster file sharing and media transmission, significantly reducing delays during remote meetings or collaborative projects, ultimately enhancing productivity.



2

Extended Connection Range for Greater Flexibility

With a connection range of up to 240 meters (depending on the environment), **Bluetooth 5.4 far surpasses Bluetooth 5.3's 120 meters**. This feature allows employees to move freely across larger office spaces or multi-floor environments while maintaining stable device connections, improving flexibility and overall job satisfaction.



3

Enhanced Multi-Device Connectivity for Streamlined Workflows

Bluetooth 5.4 allows simultaneous connections to multiple devices, which is crucial for commercial enterprises. Employees can connect wireless headsets, keyboards, and other peripherals simultaneously, simplifying their operational processes and promoting multitasking, leading to greater overall efficiency.

Triple 4K Displays

Up to 3 x 4K Displays with 2 x Thunderbolt ports (DisplayPort 2.1) and 1 x HDMI 2.1 TMDS



Security and Reliability



Built-in TPM for Security and Privacy Protection

Secure Boot
Platform Integrity
Support Encryption and Decryption operation



Secure Boot with Fingerprint Recognition

Supports for enhanced system security & Windows Hello Enhanced Sign-in Security (ESS)



Remote Control

ASUS Control Center
Microsoft Windows Autopilot enable Remote Management and Device Deployment



Robust Design

MIL-STD 810H
Multiple Tests Passed
24/7 Sustained Operations

Embargo Date: Jan. 1-21, 2025

Intel® vPro



Enhanced Security

- Intel Hardware Shield
- Threat Detection Technology

Remote Management Capabilities

- Intel Active Management Technology (AMT)
- KVM Remote Control

Platform Stability

- Stable Platform Program
- Long Lifecycle Support

Performance Optimization

- Support for Virtualization
- AI-Driven Productivity

Cost Efficiency

- Improved Device Longevity
- Lower Total Cost of Ownership (TCO)

Intel® Platform Trust Technology (TPM 2.0)

Intel® Platform Trust Technology (fTPM 2.0 or Discrete TPM 2.0 Chip) enhances data protection and tamper resistance, ensuring secure operations and simplified management for business environments.



Strengthened Platform Security

- Hardware-level key management
- Compliance with **Windows 11 security standards**

Tamper-Resistant Data Protection

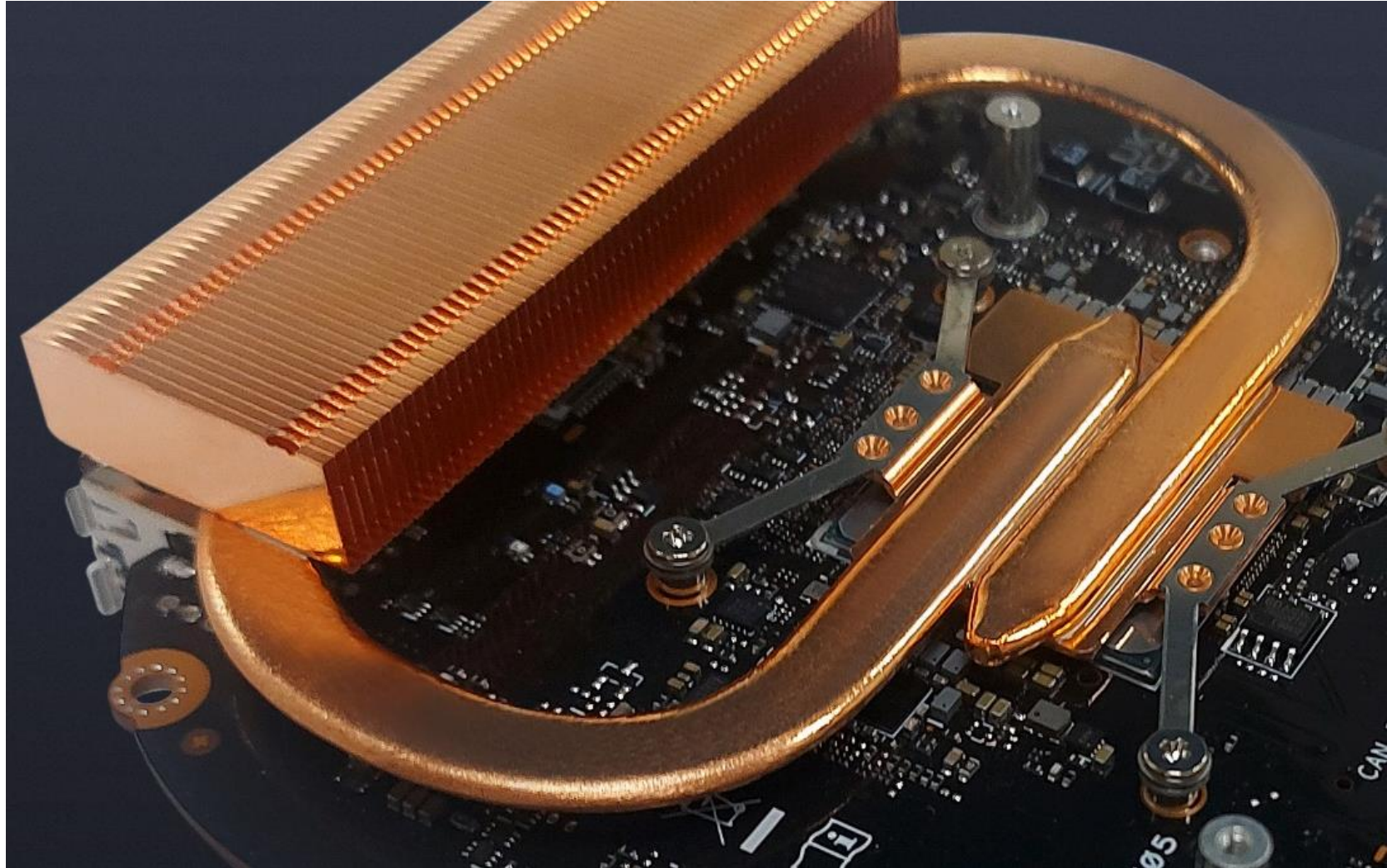
- Prevents unauthorized **BIOS modifications**
- Secures processor memory encryption

Simplified Certificate Management

- Provides **offline credential storage**
- Reduces complexity in IT management

Intelligent Cooling Solution

- Featuring a High-End **Fluid Dynamic Bearing Fan** and an Advanced **Dual-Pipe Cooling System**, which significantly improve heat dissipation efficiency while keeping the **system noise levels low**.
- Enables the **ASUS NUC 14 Pro AI** to maintain ultimate performance under heavy AI workloads.



Test Result to be updated after MP:
Dec. 13rd, 2024

Military Grade Reliability



Tested to the latest and rigorous MIL-STD-810H* standard, ASUS Mini PC is subjected to extremes of temperature, altitude and humidity, and repeatedly dropped and vibrated to ensure that it's fit to perform even in harsh conditions.

Test Category	MIL-STD-810H Test Parameters	Test Result
High Temperature Test	Storage:33~71°C, 7-day Operational:32~49°C, 3-day	
Low Temperature Test	Storage:-33~-25°C,7-day Operational:-32~ -21°C, 3-day	
Altitude Test	Storage:40,000ft, -20°C Operational:15,000ft, 5~ 40°C	
Humidity Test	95% humidity, 30°C and 60°C 10-day duration	
Vibration Test	5-500 Hz, RMS: 2.24 g, 1.45 g, 1.32 g, 3 axis Random 40 mins per axis	
Shock Test	Bench Handling (Drop Height: 100 mm)OP	

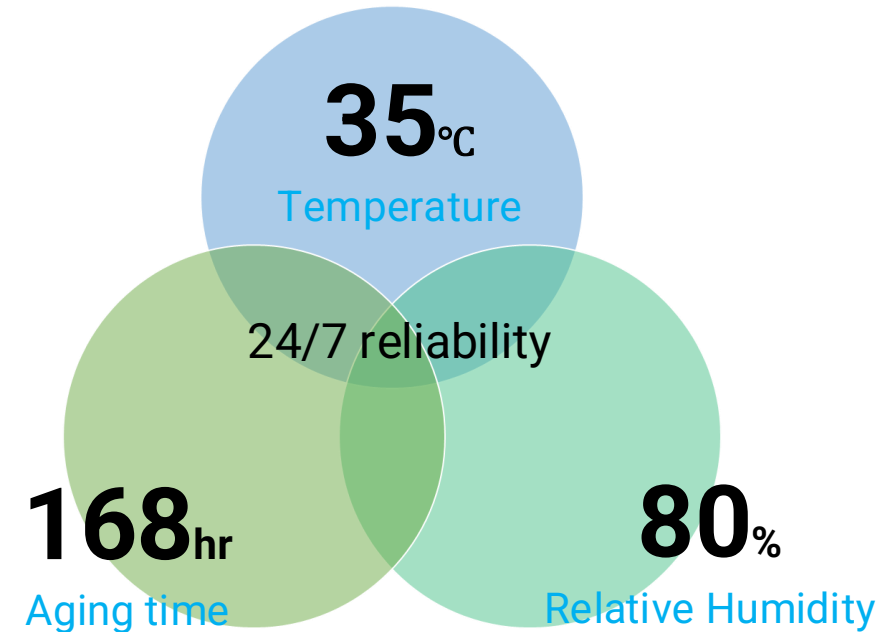
*MIL-STD-810H standard tests are held in rigorous conditions, the test results cannot ensure the performance under these test conditions or for military use.

Torture-tested for perfection

ASUS NUC 14 Pro AI was tested to withstand the rigors of transportation and the wear and tear of continuous daily use, to ensure they meet our exacting standards and exceed those used by other manufacturers.



With thorough 24/7 testing and stable supply, Mini PC is designed for modern office and business use, reducing maintenance cost and improve cost effectiveness.



Sustaining an Incredible Future

Energy Efficiency

Compliant with

**Energy
Star 9.0**

standards

Eco-friendly

Target to Register

**EPEAT Climate+
EPEAT Gold**

Extreme Power Saving

Up to

50%

lower power

Durable Component MTBF

>80,000

hours lifespan (9+ years)

Compact Design

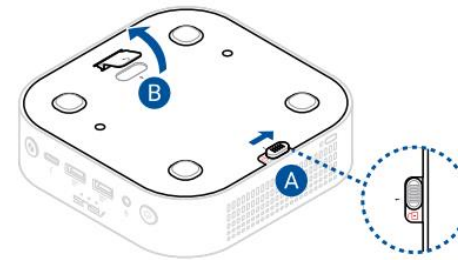
Space saving (<0.6L)

Fitting in anywhere

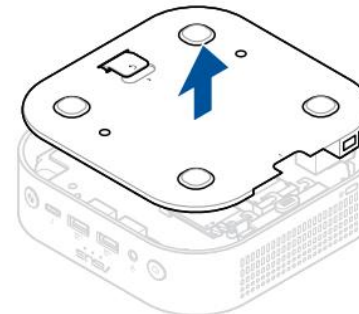


Tool-less Design

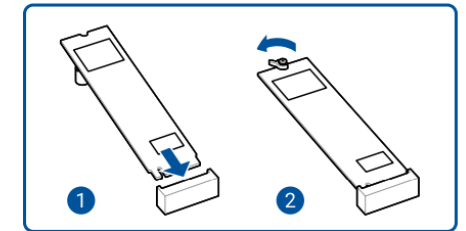
upgrade your system easily



1. Release the slide lock (A), and flip open the tab (B) on the bottom of the system.

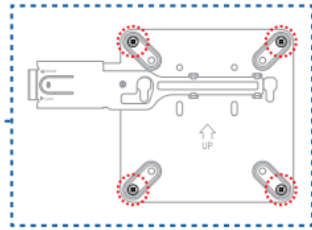
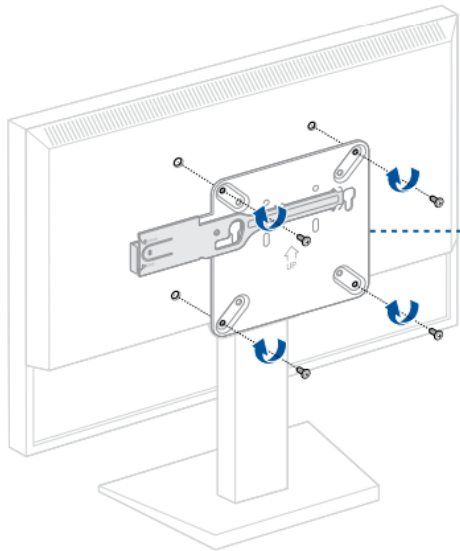


2. Remove the bottom cover



3. Insert the M.2 module into the M.2 slot on the system board.
4. Rotate the Q-Latch counterclockwise to secure the M.2 module in place.

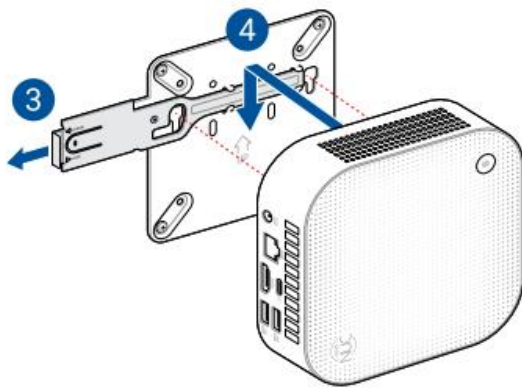
Flexible Mounting



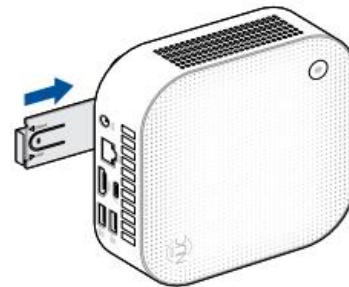
1. Attach the VESA bracket to the back of the monitor or TV using the four (4) bundled screws with the UP arrow indicator pointing upwards.



2. Attach the two slightly larger black screws to the bottom chassis cover of the NUC 14 Pro AI.



3. Pull the metal lock on the VESA mounting plate outward.
4. Align the screws on the NUC system to the notches on the VESA mount, then slide the NUC system downward to secure it in place



5. Push the metal lock back towards the NUC system until it securely snaps in place.

Business Space Optimization

VESA Mounting allows the NUC 14 Pro AI to fit under counters or behind monitors, freeing up valuable space for retail and office environments.

Seamless Integration

Keeps work areas tidy by hiding the device from view, perfect for POS systems and meeting room displays.

Quiet Operation

Runs silently and efficiently, making it ideal for continuous use in retail and restaurant settings.

I/O Ports Overview

2x USB 3.2 Gen1 Type A (5Gbps)

Audio Jack

Thunderbolt™ 4 (DP 2.1)

Power Button

Copilot Button



Fingerprint Module

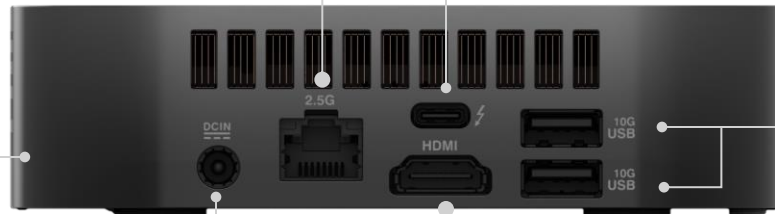


2.5 Gb Ethernet

Thunderbolt™ 4 (DP 2.1)

Kensington Lock

2x USB 3.2 Gen2 Type A (10Gbps)



DCIN

HDMI 2.1 (TMDS)

ASUS NUC 14 Pro AI
(NUC14LNK/NUC14LNV)

NUC 14 Pro AI Spec.



Intel® Core™ Ultra 9 Processor 288V

Intel® Arc™ 140V Graphics

8 Processor Cores (4P + 4LP E), 8 threads, 12MB Smart Cache, 30W TDP



Intel® Core™ Ultra 7 Processor 268V/266V

Intel® Arc™ 140V Graphics

8 Processor Cores (4P + 4LP E), 8 threads, 12MB Smart Cache, 30W TDP



Intel® Core™ Ultra 7 Processor 258V/256V

Intel® Arc™ 140V Graphics

8 Processor Cores (4P + 4LP E), 8 threads, 12MB Smart Cache, 30W TDP



Intel® Core™ Ultra 5 Processor 238V/236V

Intel® Arc™ 130V Graphics

8 Processor Cores (4P + 4LP E), 8 threads, 8MB Smart Cache, 30W TDP



Intel® Core™ Ultra 5 Processor 228V/226V

Intel® Arc™ 130V Graphics

8 Processor Cores (4P + 4LP E), 8 threads, 8MB Smart Cache, 30W TDP



- Intel® Core™ Ultra Processor (Series 2)
- Embedded LPDDR5x 8533 MHz memory on package
- 1 x M.2 2280 key M slot for PCIe Gen4x4, supports 256GB~2TB NVMe™ SSD
- 1x Intel® 2.5 Gb Gigabit Ethernet port
- Intel® Wi-Fi 7 (5 Gig) Tri-Band, supporting 802.11be and Bluetooth® 5.4 w/internal antennas 2x2
- 1 x Power button
- 2 x Thunderbolt™ 4, supporting DisplayPort 2.1 and USB4
- 1 x HDMI 2.1, support HDCP 2.2
- Supports 3 x 4K displays Up to 7.1 multichannel digital audio via HDMI
- 2 x front USB 3.2 Gen 2x1 Type A ports
- 2 x rear USB 3.2 Gen1x1 Type A ports
- 1 x 3.5mm, 4-pin, stereo output with mic support
- 1 x internal speaker with smart AMP and internal digital mics for voice command support
- 1 x fingerprint module for Windows Hello support
- 1 x Copilot button
- Dimension: 130 x 130 x 34 mm
- 19V DC 120W power supply with geo-specific AC cords
- fTPM or Optional Discrete TPM 2.0
- Mounting options: VESA mounting holes built into chassis
- MyASUS software
- Individual retail box packaging
- Three-Year limited Warranty Available

Available SKUs



Mini PC



Kit



Chassis



Board



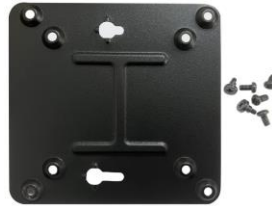
IN SEARCH OF INCREDIBLE

What's In the Box?

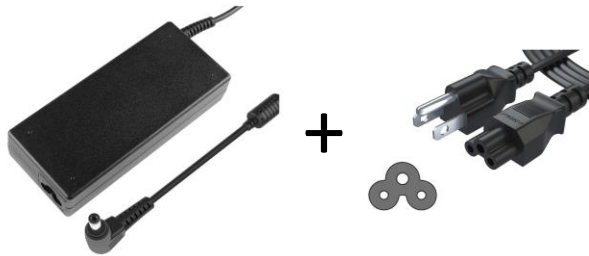
NUC 14 Pro AI



VESA Mount +
Screws



120W AC Power
Adapter and AC
Cord*



CPU Badge



Collateral Guide



Regulatory Flyer



Safety/Caution Flyer



NUC Warranty Card Flyer



Gen to Gen Comparison

	ASUS NUC 14 Pro (Meteor Lake)	ASUS NUC 14 Pro AI (Lunar Lake)
CPU/Memory	Intel Core Ultra 7 165H w/vPro	Intel Core Ultra 9 288V/ 32GB Memory
	Intel Core Ultra 7 155H	Intel Core Ultra 7 258V/ 32GB Memory
	Intel Core Ultra 5 135H w/vPro	Intel Core Ultra 7 256V/ 16GB Memory
	Intel Core Ultra 5 125H	Intel Core Ultra 5 228V/ 32GB Memory
	Intel Core 3 100U	Intel Core Ultra 5 226V/ 16GB Memory
NPU	Up to 11 TOPS	Up to 48 TOPS
Graphic	Intel® Arc Graphics Intel® Graphics (Core 3)	Intel® Arc 140V/130V Graphics
Memory	2 SO-DIMM, Up to DDR5-5600, 48GB*2	LPDDR5x-8533 MT/s Memory on Chip
Storage	1x M.2 2280 PCIe4x4, 128GB~4TB NVMe SSD	1x M.2 2280 PCIe4x4, 256GB~4TB NVMe SSD
	1x M.2 2242 PCIe4x4, 128GB~2TB NVMe SSD	
	1x SATA Port for 2.5" SSD/HDD, 128GB~4TB SATA drive* (Tall version only)	
OS / AI PC	Windows 11 AI PC	Copilot+ PC
Wireless Network	Wi-Fi 6E (802.11 ax) 2*2 + Bluetooth® 5.3	Wi-Fi 7 (802.11be) 2*2 + Bluetooth® 5.4
LAN	Intel 2.5G LAN	Intel 2.5G LAN
Trusted Platform Module	fTPM	fTPM 2.0 or TPM 2.0 Chip (Optional)
Number of Displays	4 x 4K Displays	3 x 4K Displays
I/O Ports	USB	4x Type A
	HDMI	2
	Thunderbolt 4	2
Target Usages	Connected Classroom Solutions/ Virtual Meetings Daily Tasks/ Entertainment Digital Signage/ Kiosk/ POS	Content Creation/ Productivity/ Entertainment Foundational AI Workloads/ Edge Computing
Special Features		Fingerprint for Windows Hello Support Embedded Speaker and Mic for Voice Command
MSRP	US\$399 to US\$999	US\$599 to US\$1,499



ASUS Control Center

Real-time IT monitoring and management software

ASUS Control Center is a centralized IT-management suite that enhances enterprise productivity with comprehensive control through a very friendly user interface. ASUS Control Center provides high visibility and the best IT-management experiences across ASUS enterprise and commercial products.

Easy Monitor



Efficient Monitor
Monitor Hardware to Software,
Physical to Virtual in
a single interface



Easy Search
The unique
Metadata
Management let
you tag devices
with custom
information



Power Master
Integrate Intel®
Data Center
Manager
technology to
provide real-time
power consumption
data

Remote Control



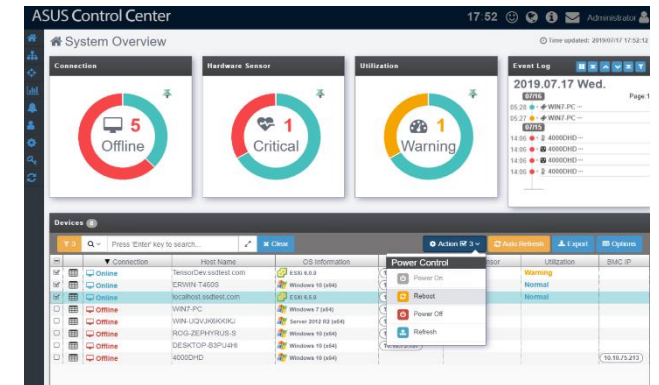
Remote Control
Remotely control
the device power
on/off and service
start/stop to reduce
the on-site servicing



Security
Enable/disable USB
storage



Management
Software dispatch
and device-
metadata
management



*Intuitive dashboard



*Mobile Control
Interface

Download Available!

<https://asuscontrolcenter.asus.com/#/global/>

* Before planning: since ACC is a relatively complex solution, please contact CPM or MDM to confirm if integrating ACC is needed.

MyASUS

Your one-stop portal for ASUS software

MyASUS gives you easy access to ASUS apps designed to help you maintain your system, update your software, optimize your PC's performance, and easily contact ASUS aftersales or customer support. You can also access ASUS GIFTBOX via MyASUS, for a huge range of popular apps and exclusive offers.



Customization

Personalize your way of using your PC including colors, charging settings, keyboard usage habits, or optimize your PC performance by changing the fan mode and network settings.



Customer support

Customer support helps users to keep updated and seamlessly access supports anytime.



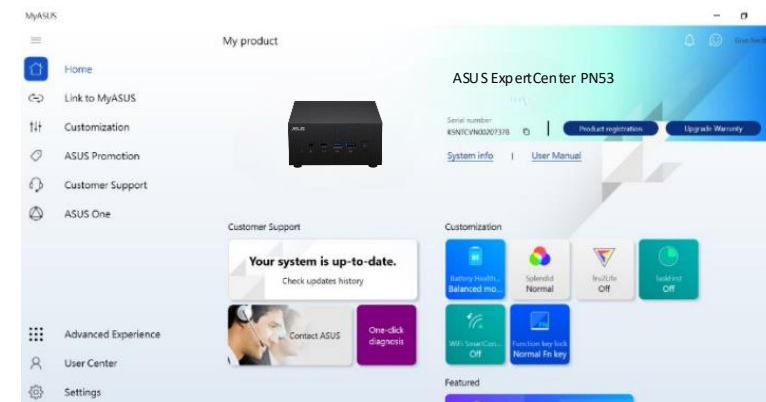
Link to MyASUS

Integrates your ASUS PC with your mobile devices, boosting your productivity and allowing easier multitasking.



ASUS Promotion

Enjoy discounts on premium apps and ASUS-exclusive deals via AppDeals.



Download Available!

<https://www.asus.com/support/myasus-deeplink/>

Maximum Support, Minimal Effort

Minimize downtime by leveraging ASUS scale and skills.
Power-manage all your assets with tailor-made service package for all your support needs.



Comprehensive Support

priority access to hardware and software experts¹



Three-year Warranty

100% free of charge, with no hidden costs. Covers over 50 countries¹



Multiple Service term available

Enjoy a door-to-door service including pick up, repair and return of supported hardware¹



MyASUS app

This exclusive app lets you contact customer service, know your device's repair status, access product instruction manuals, etc.

Special Service Need to Request



ASUS Premium Care

ASUS Premium Care provides customized services to protect your products. Please see https://www.asus.com/tw/support/premium_care/ for more information about ASUS Premium Care.



Warranty Extension

This allows customers to extend service coverage of products to match the expected length of time they will be used²



Accidental Damage Protection (ADP)

This helps avoid repair or replacement costs due to mishaps that occur during normal operation of devices^{1, 2}



Defective HDD Retention (DHR)

DHR allows customers to retain their malfunctioning hard drive while their defective drive is replaced^{1, 2}

1. Service and warranty coverage may vary depending on country and territory. Service may not be available in all markets. We recommend that you check with your local retailers to confirm the options available.

2. Must be purchased and activated within 180 days of your ASUS product purchase date via ASUS Premium Care.

Message

What is the MSRP?

Please contact your local ASUS Sales or PR representative.

When will it be available for purchase?

Q1, 2025

Where will it be available?

Worldwide

Top 5 Hero Features?

- **Powerful Platform:** Featuring the latest Intel® Core™ Ultra processor (Series 2) with multiple CPU, GPU, NPU architectures, offering 120 platform TOPS
- **Voice Command:** Built-in microphone and speaker with smart AMP support voice command to activate AI Applications.
- **Ultrafast Connectivity:** Intel® Wi-Fi 7 (5 Gig), Bluetooth® 5.4, Thunderbolt™ 4 (DP2.1)
- **Security and Reliability:** Built-in Trusted Platform Module (TPM), Secure Boot with Fingerprint Recognition for Windows Hello Enhanced Sign-in Security, and Robust Design with reliable 24/7 sustained operation
- **Compact Design:** Boost productivity with space saving (< 0.6L), toolless design, industry-leading quality, fitting in anywhere

Model Name	NUC 14 Pro AI	
OS	Windows ®11 Home/ Pro	
CPU	Intel® Core™ Ultra 9/7/5 Processors (Series 2)	
Graphics	Integrated Intel® Arc™ Graphics	
Memory	Embedded Dual LPDDR5X- 8533 16G/32G	
Storage	1 x M.2 2280 PCIe Gen4x4, supports 256GB~2TB NVMe™ SSD	
LAN	10/100/1000/2500 Mbps, 2.5G Intel® LAN	
Wi-Fi	Intel® Wi-Fi 7 (5 Gig) (Tri-Band), Bluetooth® 5.4, 2x2	
Speaker	1 x Internal Momo-Speaker with External Smart AMP	
Digital Mics	1 x Internal Digital Mics	
Top	1 x Fingerprint Module	
IO Ports	1 x Power button 1 x Copilot button 1 x Thunderbolt™ 4 (Supports DisplayPort 2.1) 2 x USB 3.2 Gen1 Type-A (5Gbps) 1 x Audio Jack (Line out/Mic in/Headphone out)	
	Side	1 x Kensington Lock slot
	Rear	1 x Thunderbolt™ 4 (Supports DisplayPort 2.1) 2 x USB 3.2 Gen2 Type-A (10Gbps) 1 x HDMI port 1 x 2.5G RJ45 LAN 1 x DC-in
	Power Supply	120W Power Adapter
Dimensions(L x W x H)	130mm X 130mm X 34mm (0.5746 Liter)	
Weight	0.53kg	

The image features a solid blue background with a diagonal split. The upper-left portion is a lighter shade of blue, while the lower-right portion is a darker shade. Centered in the lighter area is the white ASUS logo, consisting of the letters 'ASUS' in a bold, stylized font. Below the logo, the slogan 'IN SEARCH OF INCREDIBLE' is written in a clean, white, sans-serif font.

ASUS
IN SEARCH OF INCREDIBLE